

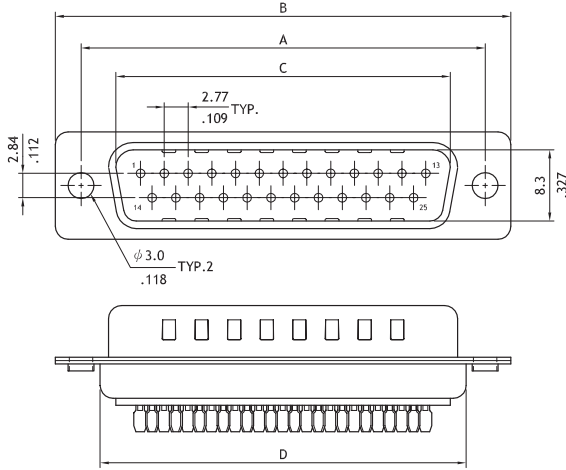
# CD51 Series Solder D-Sub

- Mate with standard D-Sub
- With metal shell and solder contacts
- Riveted Hex nuts options available

**RoHS** Compliant

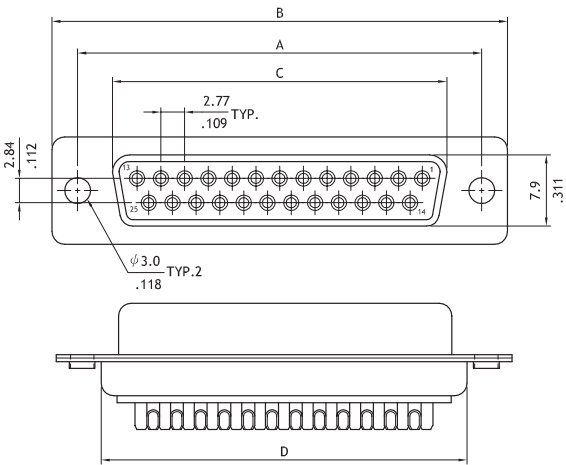
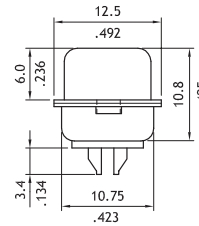


:E159616



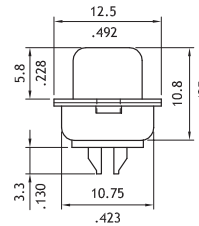
Plug Connector

Circuits	Dimension			
	A	B	C	D
9	25.00(.984)	30.8(1.213)	16.92(.666)	19.2(.756)
15	33.32(1.312)	39.2(1.543)	25.25(.994)	27.7(1.091)
25	47.04(1.852)	53.1(2.091)	38.96(1.534)	41.1(1.618)
37	63.50(2.500)	69.4(2.732)	55.42(2.182)	57.3(2.256)
50	61.00(2.402)	67.0(2.638)	52.81(2.079)	55.1(2.169)



Receptacle connector

Circuits	Dimension			
	A	B	C	D
9	25.00(.984)	30.8(1.213)	16.3(.642)	19.2(.756)
15	33.32(1.312)	39.2(1.543)	24.6(.969)	27.7(1.091)
25	47.04(1.852)	53.1(2.091)	38.3(1.508)	41.1(1.618)
37	63.50(2.500)	69.4(2.732)	54.8(2.157)	57.3(2.256)
50	61.00(2.402)	67.0(2.638)	52.2(2.055)	55.1(2.169)



## Ordering Code

1    2    3    4    5    6  
CD 5 1    2 5    P    A    1    0 0

- |  |   |   |
|--|---|---|
| <p><b>1</b> Series No.</p> <p><b>2</b> Contacts:<br/>9,15,25,37,50</p> <p><b>3</b> Connector type:<br/>P= Plug<br/>S= Receptacle</p> | <p><b>4</b> Plating code:<br/>A= Selective Gold flash over Nickel<br/>*Optional plating available but MOQ requested</p> <p><b>5</b> Insulator Color:<br/>1=Black<br/>*Optional insulator color consult manufacturer</p> | <p><b>6</b> Other options:<br/>00= with ø3.05mm holes on shell(Standard)<br/>A0= Riveted #4-40 UNC close nuts on front shell<br/>B0= Riveted #4-40 UNC open nuts on front shell<br/>C0= Riveted #4-40 UNC open nuts on rear shell<br/>*Special options Consult manufacturer</p> |
|--|---|---|