



6A, 600V Hyperfast Diodes

The RHRD660S9A-F085 is hyperfast diodes with soft recovery characteristics (trr < 30ns). It has half the recovery time of ultrafast diodes and are silicon nitride passivated ion-implanted epitaxial planar construction.

This device is intended for use as freewheeling/clamping diodes and rectifiers in a variety of switching power supplies and other power switching applications. Its low stored charge and hyperfast soft recovery minimize ringing and electrical noise in many power switching circuits reducing power loss in the switching transistors.

Formerly developmental type TA49057.



Features

- Hyperfast with Soft Recovery . . . . . <30ns
• Operating Temperature . . . . . 175°C
• Reverse Voltage Up To . . . . . 600V
• Avalanche Energy Rated
• Planar Construction
• Qualified to AEC Q101
• RoHS Compliant

Applications

- Switching Power Supplies
• Power Switching Circuits
• General Purpose

Ordering Information

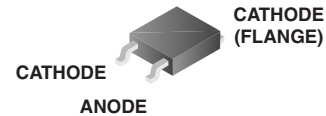
Table with 3 columns: PART NUMBER, PACKAGE, BRAND. Row 1: RHRD660S9A-F085, TO-252, RHR660

Symbol



Packaging

JEDEC STYLE TO-252



Absolute Maximum Ratings TC = 25°C, Unless Otherwise Specified

Table with 4 columns: Parameter, Symbol, RHRD660S9A-F085, UNITS. Rows include Peak Repetitive Reverse Voltage, Working Peak Reverse Voltage, DC Blocking Voltage, Average Rectified Forward Current, Repetitive Peak Surge Current, Nonrepetitive Peak Surge Current, Maximum Power Dissipation, Avalanche Energy, Operating and Storage Temperature, Maximum Lead Temperature for Soldering.

**Electrical Specifications**  $T_C = 25^\circ\text{C}$ , Unless Otherwise Specified

| SYMBOL          | TEST CONDITION                                       | MIN | TYP | MAX | UNITS                     |
|-----------------|--|-----|-----|-----|---------------------------|
| $V_F$           | $I_F = 6\text{A}$                                    | -   | -   | 2.1 | V                         |
|                 | $I_F = 6\text{A}, T_C = 150^\circ\text{C}$           | -   | -   | 1.7 | V                         |
| $I_R$           | $V_R = 600\text{V}$                                  | -   | -   | 100 | $\mu\text{A}$             |
|                 | $V_R = 600\text{V}, T_C = 150^\circ\text{C}$         | -   | -   | 500 | $\mu\text{A}$             |
| $t_{rr}$        | $I_F = 1\text{A}, dI_F/dt = 200\text{A}/\mu\text{s}$ | -   | -   | 30  | ns                        |
|                 | $I_F = 6\text{A}, dI_F/dt = 200\text{A}/\mu\text{s}$ | -   | -   | 35  | ns                        |
| $t_a$           | $I_F = 6\text{A}, dI_F/dt = 200\text{A}/\mu\text{s}$ | -   | 16  | -   | ns                        |
| $t_b$           | $I_F = 6\text{A}, dI_F/dt = 200\text{A}/\mu\text{s}$ | -   | 8.5 | -   | ns                        |
| $Q_{RR}$        | $I_F = 6\text{A}, dI_F/dt = 200\text{A}/\mu\text{s}$ | -   | 45  | -   | nC                        |
| $C_J$           | $V_R = 10\text{V}, I_F = 0\text{A}$                  | -   | 20  | -   | pF                        |
| $R_{\theta JC}$ |  | -   | -   | 3   | $^\circ\text{C}/\text{W}$ |

**DEFINITIONS**

$V_F$  = Instantaneous forward voltage ( $p_w = 300\mu\text{s}, D = 2\%$ ).

$I_R$  = Instantaneous reverse current.

$t_{rr}$  = Reverse recovery time (See Figure 9), summation of  $t_a + t_b$ .

$t_a$  = Time to reach peak reverse current (See Figure 9).

$t_b$  = Time from peak  $I_{RM}$  to projected zero crossing of  $I_{RM}$  based on a straight line from peak  $I_{RM}$  through 25% of  $I_{RM}$  (See Figure 9).

$Q_{RR}$  = Reverse recovery charge.

$C_J$  = Junction capacitance.

$R_{\theta JC}$  = Thermal resistance junction to case.

$p_w$  = Pulse width.

$D$  = Duty cycle.

**Typical Performance Curves**

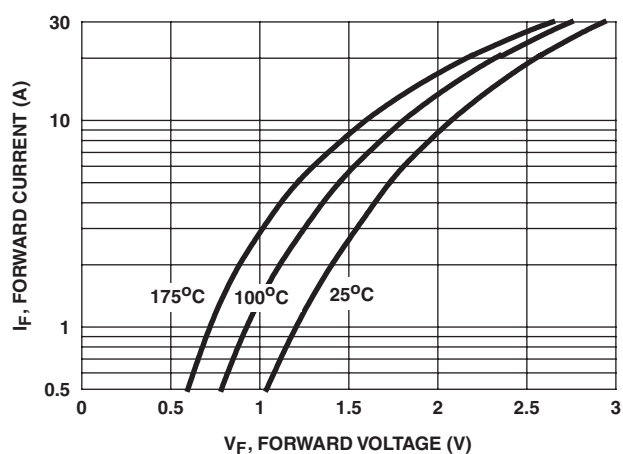


FIGURE 1. FORWARD CURRENT vs FORWARD VOLTAGE

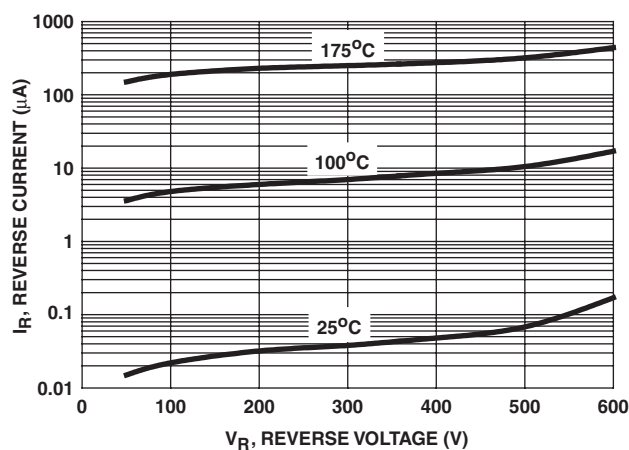


FIGURE 2. REVERSE CURRENT vs REVERSE

Typical Performance Curves (Continued)

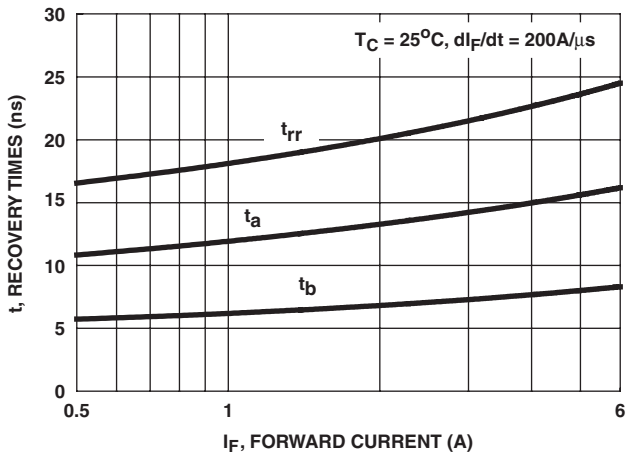


FIGURE 3.  $t_{rr}$ ,  $t_a$  AND  $t_b$  CURVES vs FORWARD CURRENT

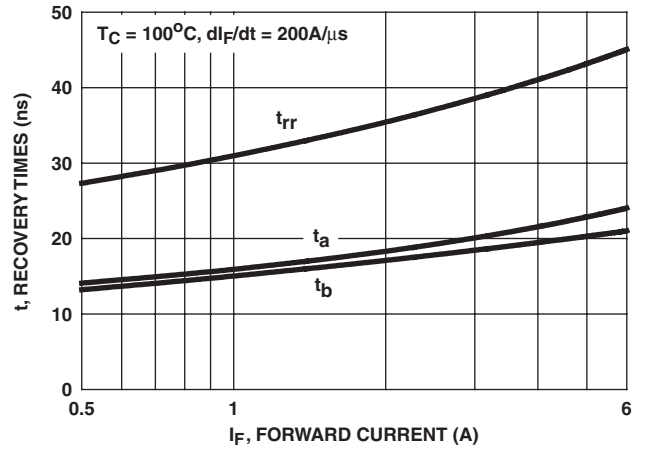


FIGURE 4.  $t_{rr}$ ,  $t_a$  AND  $t_b$  CURVES vs FORWARD CURRENT

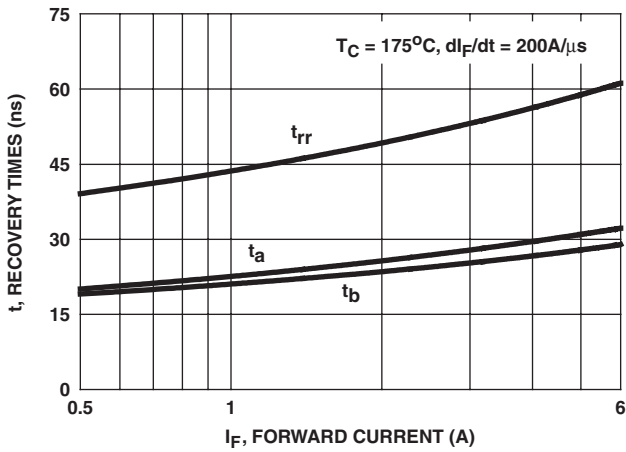


FIGURE 5.  $t_{rr}$ ,  $t_a$  AND  $t_b$  CURVES vs FORWARD CURRENT

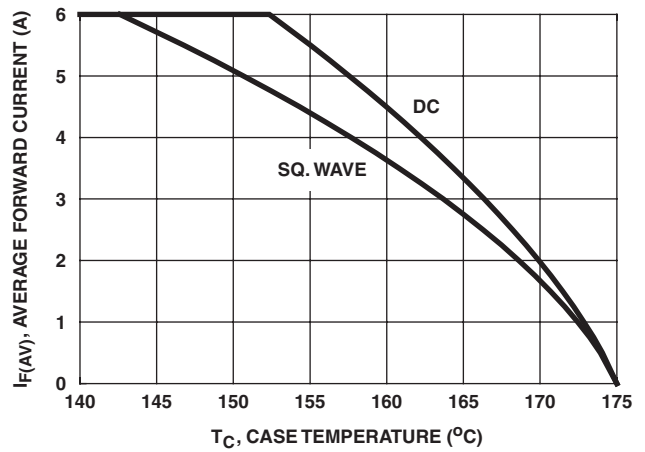


FIGURE 6. CURRENT DERATING CURVE

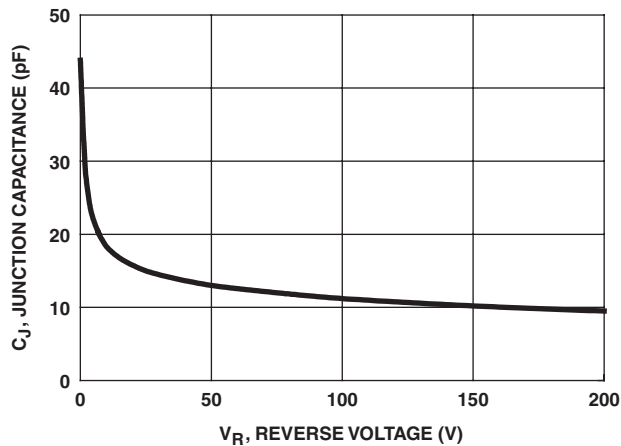


FIGURE 7. JUNCTION CAPACITANCE vs REVERSE VOLTAGE

**Test Circuits and Waveforms**

$V_{GE}$  AMPLITUDE AND  
 $R_G$  CONTROL  $di_F/dt$   
 $t_1$  AND  $t_2$  CONTROL  $I_F$

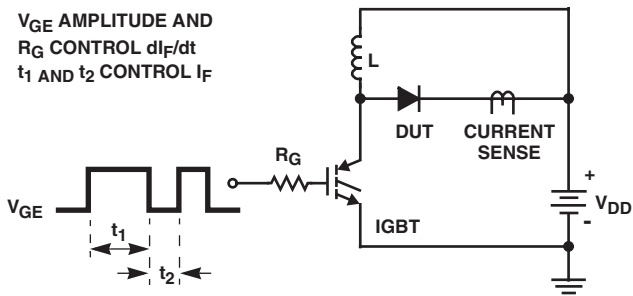


FIGURE 8.  $t_{rr}$  TEST CIRCUIT

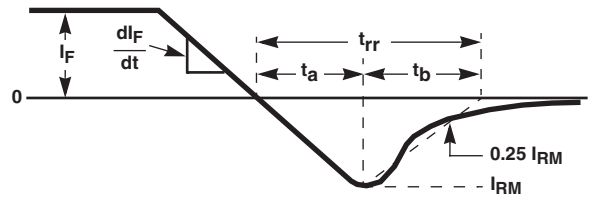


FIGURE 9.  $t_{rr}$  WAVEFORMS AND DEFINITIONS

$I_{MAX} = 1A$   
 $L = 20mH$   
 $R < 0.1\Omega$   
 $E_{AVL} = 1/2Li^2 [V_{R(AVL)}/(V_{R(AVL)} - V_{DD})]$   
 $Q_1 = IGBT (BV_{CES} > DUT V_{R(AVL)})$

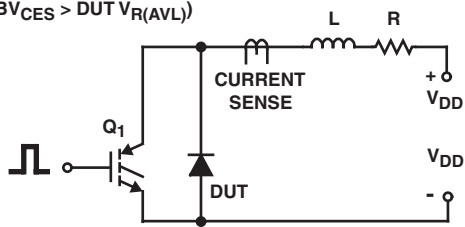


FIGURE 10. AVALANCHE ENERGY TEST CIRCUIT

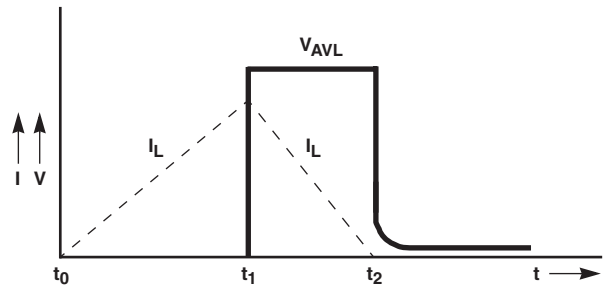


FIGURE 11. AVALANCHE CURRENT AND VOLTAGE WAVEFORMS

ON Semiconductor and  are trademarks of Semiconductor Components Industries, LLC dba ON Semiconductor or its subsidiaries in the United States and/or other countries. ON Semiconductor owns the rights to a number of patents, trademarks, copyrights, trade secrets, and other intellectual property. A listing of ON Semiconductor's product/patent coverage may be accessed at [www.onsemi.com/site/pdf/Patent-Marking.pdf](http://www.onsemi.com/site/pdf/Patent-Marking.pdf). ON Semiconductor reserves the right to make changes without further notice to any products herein. ON Semiconductor makes no warranty, representation or guarantee regarding the suitability of its products for any particular purpose, nor does ON Semiconductor assume any liability arising out of the application or use of any product or circuit, and specifically disclaims any and all liability, including without limitation special, consequential or incidental damages. Buyer is responsible for its products and applications using ON Semiconductor products, including compliance with all laws, regulations and safety requirements or standards, regardless of any support or applications information provided by ON Semiconductor. "Typical" parameters which may be provided in ON Semiconductor data sheets and/or specifications can and do vary in different applications and actual performance may vary over time. All operating parameters, including "Typicals" must be validated for each customer application by customer's technical experts. ON Semiconductor does not convey any license under its patent rights nor the rights of others. ON Semiconductor products are not designed, intended, or authorized for use as a critical component in life support systems or any FDA Class 3 medical devices or medical devices with a same or similar classification in a foreign jurisdiction or any devices intended for implantation in the human body. Should Buyer purchase or use ON Semiconductor products for any such unintended or unauthorized application, Buyer shall indemnify and hold ON Semiconductor and its officers, employees, subsidiaries, affiliates, and distributors harmless against all claims, costs, damages, and expenses, and reasonable attorney fees arising out of, directly or indirectly, any claim of personal injury or death associated with such unintended or unauthorized use, even if such claim alleges that ON Semiconductor was negligent regarding the design or manufacture of the part. ON Semiconductor is an Equal Opportunity/Affirmative Action Employer. This literature is subject to all applicable copyright laws and is not for resale in any manner.

## PUBLICATION ORDERING INFORMATION

### LITERATURE FULFILLMENT:

Literature Distribution Center for ON Semiconductor  
19521 E. 32nd Pkwy, Aurora, Colorado 80011 USA  
**Phone:** 303-675-2175 or 800-344-3860 Toll Free USA/Canada  
**Fax:** 303-675-2176 or 800-344-3867 Toll Free USA/Canada  
**Email:** [orderlit@onsemi.com](mailto:orderlit@onsemi.com)

**N. American Technical Support:** 800-282-9855 Toll Free  
USA/Canada  
**Europe, Middle East and Africa Technical Support:**  
Phone: 421 33 790 2910  
**Japan Customer Focus Center**  
Phone: 81-3-5817-1050

**ON Semiconductor Website:** [www.onsemi.com](http://www.onsemi.com)  
**Order Literature:** <http://www.onsemi.com/orderlit>  
For additional information, please contact your local  
Sales Representative