

# Budget Box Camera

## VTP-552, VTP-551, VTP-331

### SPECIFICATIONS



#### **VTP-552** <sup>new</sup>

1/3" Med-Res. Color Camera  
Video/DC IRIS Control  
Backlight Compensation



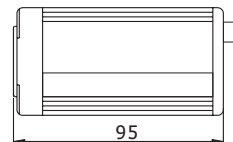
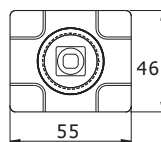
#### **VTP-551**

1/3" Med-Res. Color Camera  
420TVL / 0.3Lux@F2.0  
Video/DC IRIS Control  
Backlight Compensation



#### **VTP-331**

1/3" Med-Res. B/W CCD Camera  
Minimum Illumination:0.08Lux  
Auto Gain Control



Tol: ± 0.5 Unit:mm

### DIMENSIONS

	VTP-552		VTP-551		VTP-331	
	PAL	NTSC	PAL	NTSC	CCIR	EIA
TV System	PAL	NTSC	PAL	NTSC	CCIR	EIA
Image Sensor	1/3" SONY SUPER HAD CCD		1/3" Color CCD		1/3" B/W CCD	
Number Of Total Pixels	537(H) X 597(V)	537(H) X 505(V)	537(H) X 597(V)	537(H) X 505(V)	537(H) X 597(V)	537(H) X 505(V)
Synchronizing System	Internal					
Resolution	420 TVL				450 TVL	
Minimum Illumination	0.25Lux@F1.2		0.3Lux@F2.0		0.08Lux@F1.2	
Electronic Shutter Speed Mode	AES ON:1/50(60)sec.~ 1/100,000sec. AES OFF:1/50(60)sec					
Back Light Compensation	ON/OFF(Switchable)					
Auto Gain Control	N/A					
Signal to Noise Ratio	More than 48dB(AGC Off)					
Auto Iris Control	Video /DC(Switchable)					
Auto White Balance	3200°K~9200°K				0.45	
Video Output	1Vp-p Composite; 75Ω (BNC Adaptor)					
Lens Mount	C/CS(With Adaptor)					
Power Supply	12Vdc ± 10 %					
Power Consumption	150mA				120mA	
Operation Temperature	-10°C ~ +50°C					
Operation Humidity	RH85% or less					
Storage Temperature	-20°C ~ 60°C					
Dimensions	55(W) X 46(H) X 95(L)					
Weight	220g					

