

TA7060AP

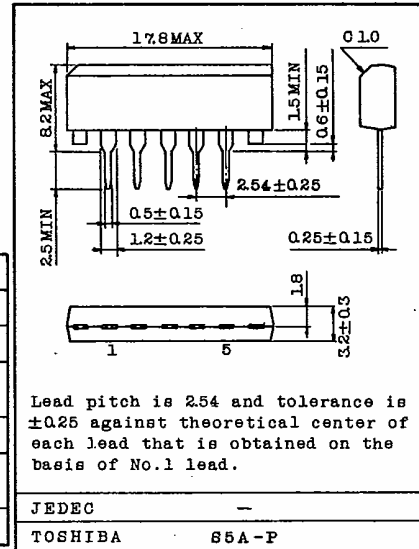
T-74-09-01

FOR FM IF AMPLIFIER

FOR TV SIF AMPLIFIER

- Recommended for Wide and Narrow Bands Amplifier.
- Excellent FM/IF Limiter Circuit.

Unit in mm



MAXIMUM RATINGS (Ta=25°C)

CHARACTERISTIC	SYMBOL	RATING	UNIT
Supply Voltage	V _{CC}	15	V
Output Voltage	V _{OUT}	24	V
Input Voltage (Between 1 pin and 2 pin)	V _{IN}	±15	V
Power Dissipation (Note)	P _D	400	mW
Operating Temperature (V _{CC} =12V)	T _{opr}	-30 ~ 75	°C
Storage Temperature	T _{stg}	-55 ~ 125	°C

Note: Derated above Ta=25°C in the proportion of 4 mW/°C.

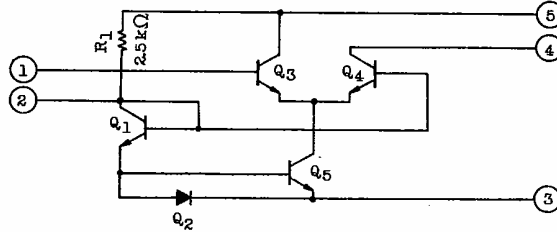
ELECTRICAL CHARACTERISTICS (Ta=25°C)

CHARACTERISTIC		SYMBOL	TEST CIR-CUIT	TEST CONDITION	MIN.	TYP.	MAX.	UNIT
Supply Current		I _{CC}	1	V _{CC} =12V	5.3	9.5	14	mA
				V _{CC} =9V	-	6.5	-	
Power Dissipation		P _D	1	V _{CC} =12V	-	114	-	mW
				V _{CC} =9V	-	59	-	
Power Gain		G _p	2	V _{CC} =12V, f=10.7MHz	27	30	33	dB
				V _{CC} =9V, f=10.7MHz	-	27	-	
Voltage Gain		G _v	3	V _{CC} =12V, R _g =50Ω, R _L =1kΩ	-	26.5	-	dB
Input Impedance	Parallel Input Resistance	r _{ip}	-	V _{CC} =12V f=10.7MHz	-	3.5	-	kΩ
	Parallel Input Capacitance	c _{ip}			-	8.0	-	pF
Output Impedance	Parallel Output Resistance	r _{op}	-	V _{CC} =12V f=10.7MHz	-	80	-	kΩ
	Parallel Output Capacitance	c _{op}			-	3.0	-	pF
Forward Transfer Admittance		y _f	-	-	-	30	-	mΩ
Reverse Transfer Admittance		y _r	-	-	-	2.0	-	μΩ

AUDIO LINEAR IC

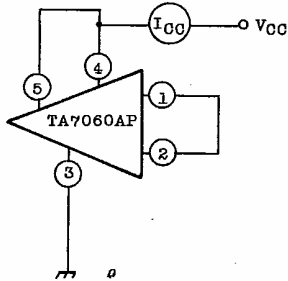
TA7060AP

EQUIVALENT CIRCUIT

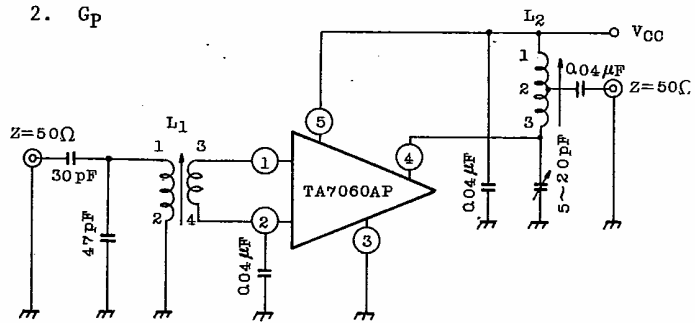


TEST CIRCUIT

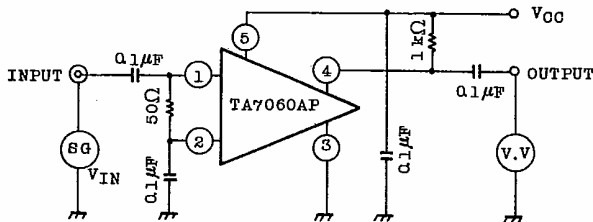
1. I_{CC}, P_D



2. G_p



3. G_V



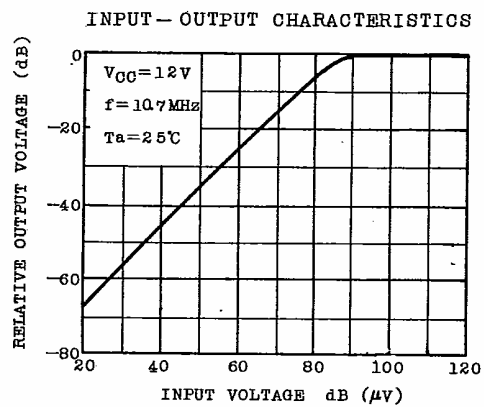
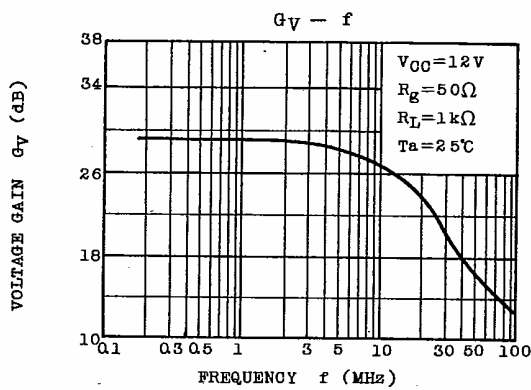
L_1 : Between terminals 1 and 2
16 Turns.

Between terminals 3 and 4
2 Turns.

L_2 : Between terminals 1 and 2
15 Turns.

Between terminals 1 and 3
25 Turns.

0.10mm \varnothing UEW



TOSHIBA

