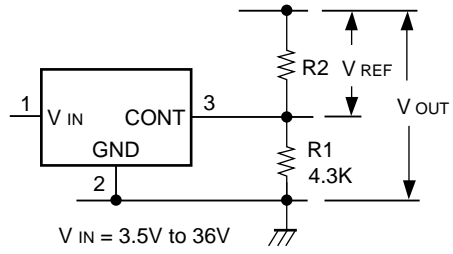
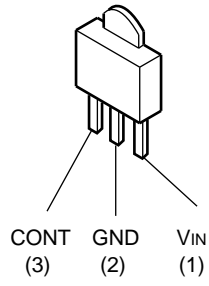

ADJUSTABLE VOLTAGE REGULATOR



$V_{IN} = 3.5V \text{ to } 36V$

$V_{OUT} = 1.5V \text{ to } 33V$

$$V_{OUT} = V_{REF} \left(1 + \frac{R_2}{R_1}\right) \approx 1.26 \times \left(1 + \frac{R_2}{4.3}\right) (V)$$

($R_1 = 4.3K\Omega$, $V_{REF} \approx 1.26V$)