

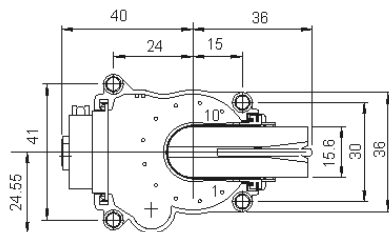


APPLICATION

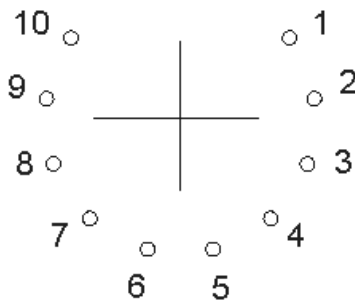
This Line Output Power Transformer series has been developed to provide the required scanning amplitude and EHT for the full range of 110° CTV's up to 37" screen size operating at line frequency of 15.6KHz (standard) or 31.25KHz(HDTV).The external connections are made via 10 pins which are directly solderable to the PCB. The integrated bleeder resistor guarantees a quick discharge of the CRT and gives better performances of the HV regulation.

The transformer has to be used in conjunction with a separate Focus/G2 potentiometer. This series is designed in order to meet International Safety Standards.

MECHANICAL DIMENSIONS (mm)

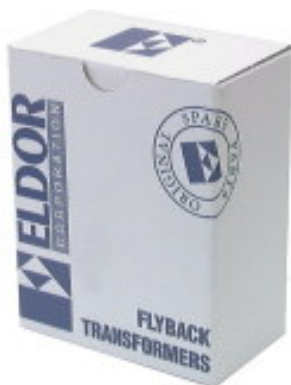


FOOTPRINT (copper side)



D 30mm

PACKAGING (single box)



WxLxH (mm) 100x60x128

SCHEMATIC DIAGRAM

1362.3601

