

REPETITIVE AVALANCHE AND  $dv/dt$  RATED**HEXFET® TRANSISTORS****IRFR9020****IRFR9022****IRFU9020****IRFU9022****P-CHANNEL**

D-PAK

**-50 Volt, 0.20 Ohm HEXFET**

The HEXFET® technology is the key to International Rectifier's advanced line of power MOSFET transistors. The efficient geometry and unique processing of this latest "State of the Art" design achieves: very low on-state resistance combined with high transconductance; superior reverse energy and diode recovery  $dv/dt$  capability.

The HEXFET transistors also feature all of the well established advantages of MOSFETs such as voltage control, very fast switching, ease of paralleling and temperature stability of the electrical parameters.

Surface mount packages enhance circuit performance by reducing stray inductances and capacitance. The D-Pak (TO-252AA) surface mount package brings the advantages of HEXFETs to high volume applications where PC Board surface mounting is desirable. The surface mount option IRFR9020 is provided on 16mm tape. The straight lead option IRFU9020 of the device is called the I-Pak (TO-251AA).

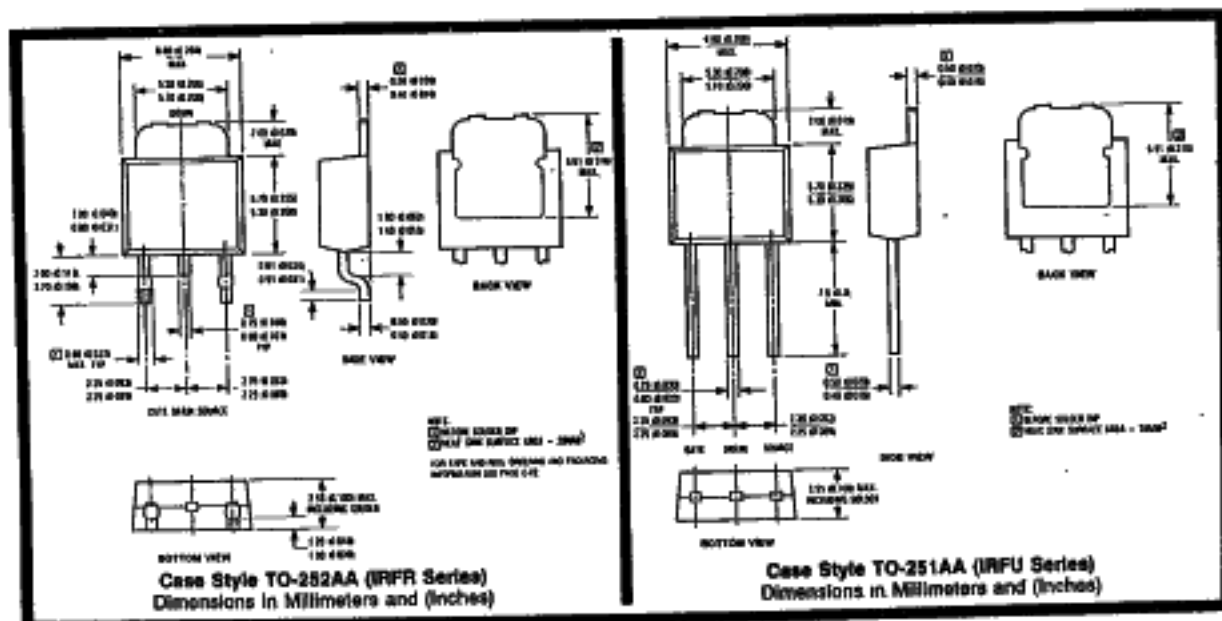
They are well suited for applications where limited heat dissipation is required such as, computers and peripherals, telecommunications equipment, DC/DC converters, and a wide range of consumer products.

**Product Summary**

Part Number	$BV_{DSS}$	$R_{DS(on)}$	$I_D$
IRFR9020	-50V	0.28 $\Omega$	-9.9A
IRFR9022	-50V	0.33 $\Omega$	-9.0A
IRFU9020	-50V	0.28 $\Omega$	-9.9A
IRFU9022	-50V	0.33 $\Omega$	-9.0A

**FEATURES:**

- Surface Mountable (Order As IRFR9020)
- Straight Lead Option (Order As IRFU9020)
- Repetitive Avalanche Ratings
- Dynamic  $dv/dt$  Rating
- Simple Drive Requirements
- Ease of Paralleling

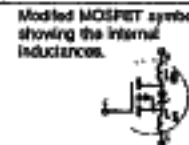


## Absolute Maximum Ratings


Parameter	IRFR9020, IRFU9020	IRFR9022, IRFU9022	Units
$I_D @ T_C = 25^\circ\text{C}$ Continuous Drain Current	-9.9	-9.0	A
$I_D @ T_C = 100^\circ\text{C}$ Continuous Drain Current	-6.3	-5.7	A
$I_{DM}$ Pulsed Drain Current (1)	-40	-36	A
$P_D @ T_C = 25^\circ\text{C}$ Max. Power Dissipation	42		W
Linear Derating Factor	0.20		W/K (2)
$V_{GS}$ Gate-to-Source Voltage	±20		V
$E_{AS}$ Single Pulse Avalanche Energy (2)	440 (See Fig. 14)		mJ
$I_{AR}$ Avalanche Current (Repetitive or Non-Repetitive) (1)	-9.9 (See $E_{AS}$ )		A
$E_{AR}$ Repetitive Avalanche Energy (1)	4.2 (See $I_{AR}$ )		mJ
$d_{vdt}$ Peak Clode recovery $d_{vdt}$ (3)	5.8 (See Fig. 17)		V/μs
$T_J$ Operating Junction Temperature Range	-55 to 150		$^\circ\text{C}$
$T_{STG}$ Storage Temperature Range	-55 to 150		$^\circ\text{C}$
Lead Temperature	300 (0.063 in. (1.6mm) from case for 10s)		$^\circ\text{C}$

Electrical Characteristics @  $T_J = 25^\circ\text{C}$  (Unless Otherwise Specified)

Parameter	Type	Min.	Typ.	Max.	Units	Test Conditions
$BV_{DSS}$ Drain-to-Source Breakdown Voltage	ALL	-50			V	$V_{GS} = 0V, I_D = -250\mu\text{A}$
$R_{DS(on)}$ Static Drain-to-Source On-State Resistance (4)	IRFR9020 IRFU9020	—	0.20	0.28	$\Omega$	$V_{GS} = -10V, I_D = 5.7A$
	IRFR9022 IRFU9022	—	0.28	0.33		
$I_{D(on)}$ On-State Drain Current (5)	IRFR9020 IRFU9020	-9.9	—	—	A	$V_{GS} > I_{D(on)} \times R_{DS(on)}$ Max. $V_{GS} = -10V$
	IRFR9022 IRFU9022	-9.0	—	—		
$V_{GS(th)}$ Gate Threshold Voltage	ALL	-2.0	—	-4.0	V	$V_{DS} = V_{GS}, I_D = -250\mu\text{A}$
$g_{fs}$ Forward Transconductance (6)	ALL	2.3	3.5	—	SR/Ω	$V_{DS} = -50V, I_D = -5.7A$
$I_{DSS}$ Zero Gate Voltage Drain Current	ALL	—	—	250	$\mu\text{A}$	$V_{GS} = \text{Max. Rating}, V_{DS} = 0V$ $V_{GS} = 0V, T_J = 125^\circ\text{C}$
		—	—	1000		
$I_{GSS}$ Gate-to-Source Leakage Forward	ALL	—	—	-500	nA	$V_{GS} = -20V$
$I_{GSS}$ Gate-to-Source Leakage Reverse	ALL	—	—	500	nA	$V_{GS} = 20V$
$Q_g$ Total Gate Charge	ALL	—	9.4	14	nC	$V_{GS} = -10V, I_D = -9.7A$ $V_{DS} = 0.5 \times \text{Max. Rating}$
$Q_{gs}$ Gate-to-Source Charge	ALL	—	4.3	6.5	nC	See Fig. 16
$Q_{gd}$ Gate-to-Drain ("Miller") Charge	ALL	—	4.3	6.5	nC	(Independent of operating temperature)
$t_{d(on)}$ Turn-On Delay Time	ALL	—	8.2	12	ns	$V_{DS} = -25V, I_D = -9.7A, R_{\theta} = 18\Omega$
$t_r$ Rise Time	ALL	—	57	86	ns	$R_{\theta} = 2.0\Omega$
$t_{d(off)}$ Turn-Off Delay Time	ALL	—	12	18	ns	See Fig. 15
$t_f$ Fall Time	ALL	—	25	38	ns	(Independent of operating temperature)
$L_D$ Internal Drain Inductance	ALL	—	4.5	—	nH	Measured from the drain lead, 6mm (0.25 in.) from package to center of die.
$L_S$ Internal Source Inductance	ALL	—	7.5	—	nH	Measured from the source lead, 6mm (0.25 in.) from package to source bonding pad.
$C_{iss}$ Input Capacitance	ALL	—	490	—	pF	$V_{GS} = 0V, V_{DS} = -25V$
$C_{oss}$ Output Capacitance	ALL	—	320	—	pF	$f = 1.0 \text{ MHz}$
$C_{riss}$ Reverse Transfer Capacitance	ALL	—	70	—	pF	See Fig. 10



Source-Drain Diode Ratings and Characteristics

Parameter	Type	Min.	Typ.	Max.	Units	Test Conditions
$I_S$ Continuous Source Current (Body Diode)	ALL	—	—	-9.9	A	Modified MOSFET symbol showing the integrated Reverse p-n junction rectifier. 
$I_{SM}$ Pulsed Source Current (Body Diode) ①	ALL	—	—	-40	A	
$V_{SD}$ Diode Forward Voltage ②	ALL	—	—	-0.9	V	$T_J = 25^\circ\text{C}$ , $I_S = -9.9\text{A}$ , $V_{GS} = 0\text{V}$
$t_{rv}$ Reverse Recovery Time	ALL	90	110	200	ns	$T_J = 25^\circ\text{C}$ , $I_S = -9.7\text{A}$ , $dI/dt = 100\text{A}/\mu\text{s}$
$Q_{RR}$ Reverse Recovery Charge	ALL	0.17	0.34	0.65	$\mu\text{C}$	
$t_{on}$ Forward Turn-On Time	ALL	Intrinsic turn-on time is negligible. Turn-on speed is substantially controlled by $L_S + L_D$ .				

Thermal Resistance

$R_{\theta JC}$ Junction-to-Case	ALL	—	—	3.0	K/W ③
$R_{\theta CS}$ Case-to-Sink	ALL	—	1.7	—	K/W ④ Typical solder mount
$R_{\theta JA}$ Junction-to-Ambient	ALL	—	—	110	K/W ⑤ Typical socket mount



- ① Repetitive Rating; Pulse width limited by maximum junction temperature (see Figure 5)
- ② @  $V_{SD} = -20\text{V}$ , Starting  $T_J = 25^\circ\text{C}$ ,  $L = 5.1\text{mH}$ ,  $R_G = 25\Omega$ , Peak  $I_S = -9.9\text{A}$
- ③  $I_{SD} \leq -9.9\text{A}$ ,  $dI/dt \leq -120\text{A}/\mu\text{s}$ ,  $V_{DD} \leq 40\text{V}$ ,  $T_J \leq 150^\circ\text{C}$ , Suggested  $R_G = 18\Omega$
- ④ Pulse width  $\leq 300\mu\text{s}$ ; Duty Cycle  $\leq 2\%$
- ⑤  $\text{KW} = ^\circ\text{C}/\text{W}$ ,  $\text{WK} = \text{W}/^\circ\text{C}$
- ⑥ Mounting pad must cover heatlink surface area. See case style drawing on front page.

The information shown on the following graphs applies also to the IRFU devices.

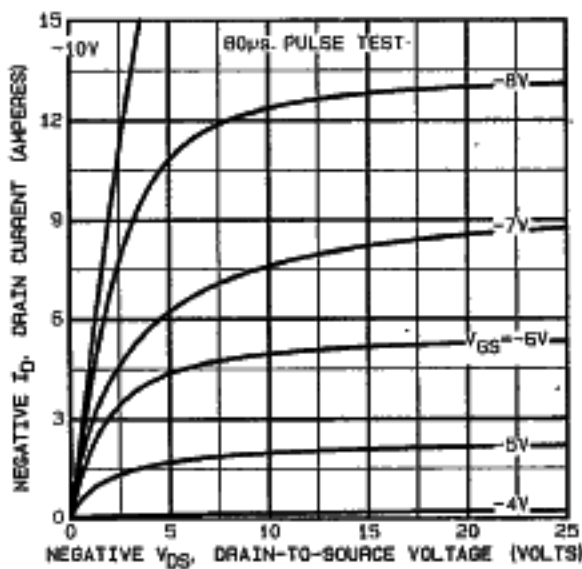


Fig. 1 — Typical Output Characteristics

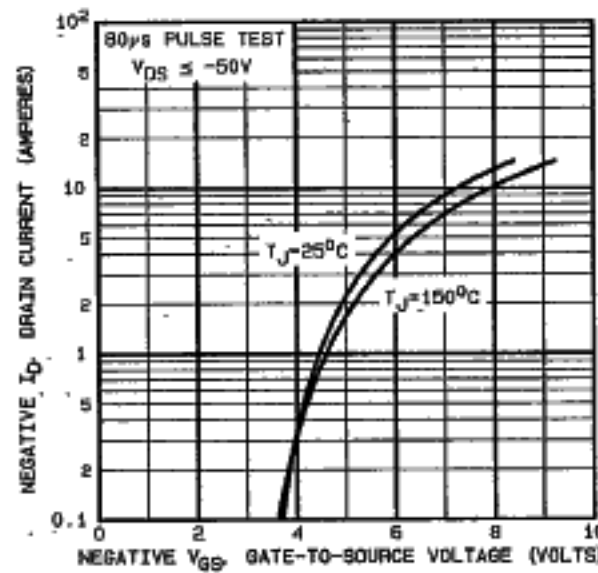


Fig. 2 — Typical Transfer Characteristics

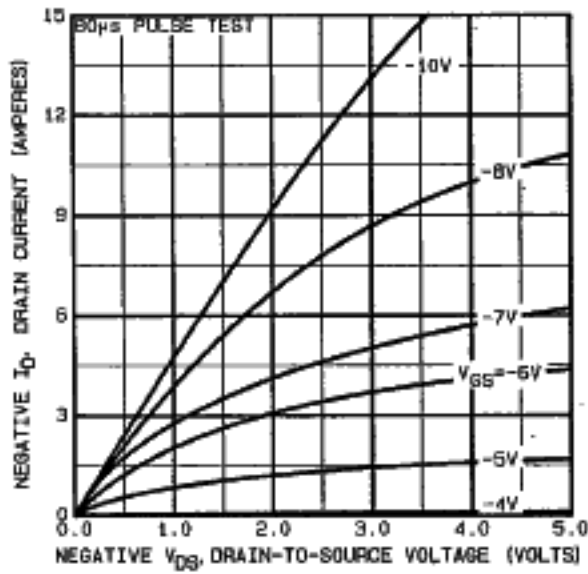


Fig. 3 - Typical Saturation Characteristics

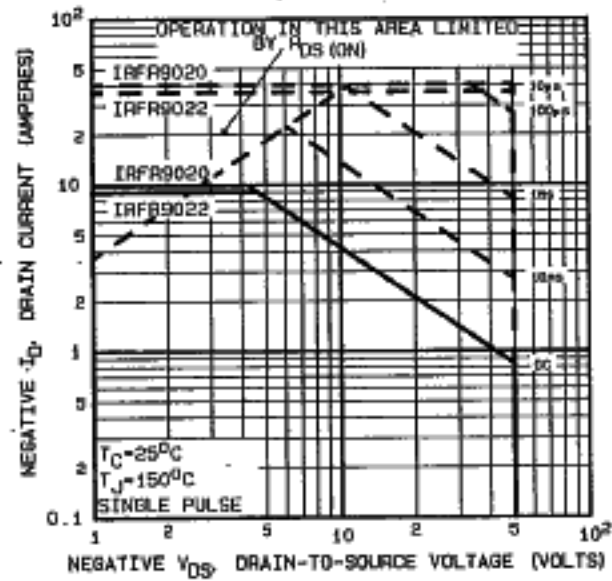


Fig. 4 - Maximum Safe Operating Area

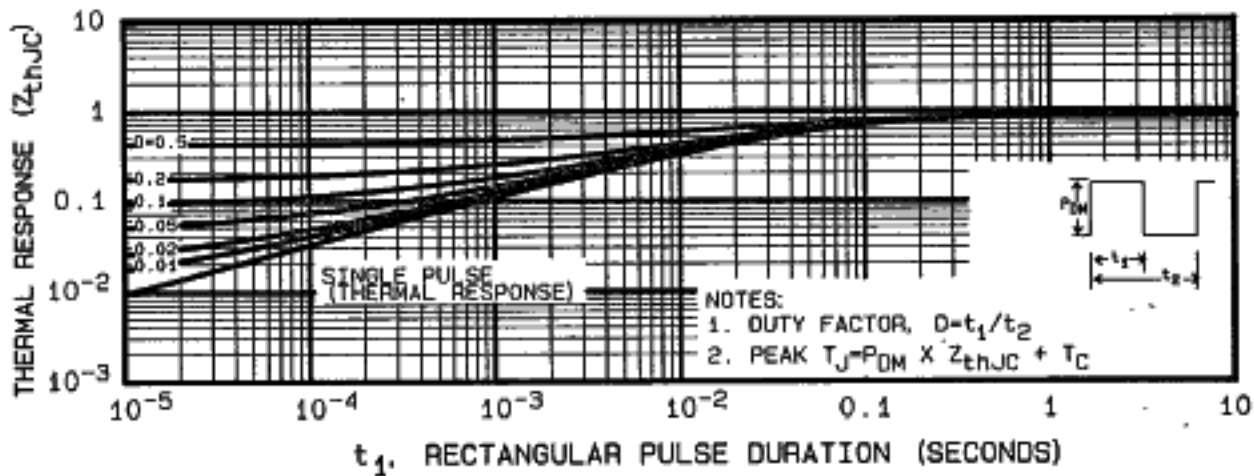


Fig. 5 - Maximum Effective Transient Thermal Impedance, Junction-to-Case Vs. Pulse Duration

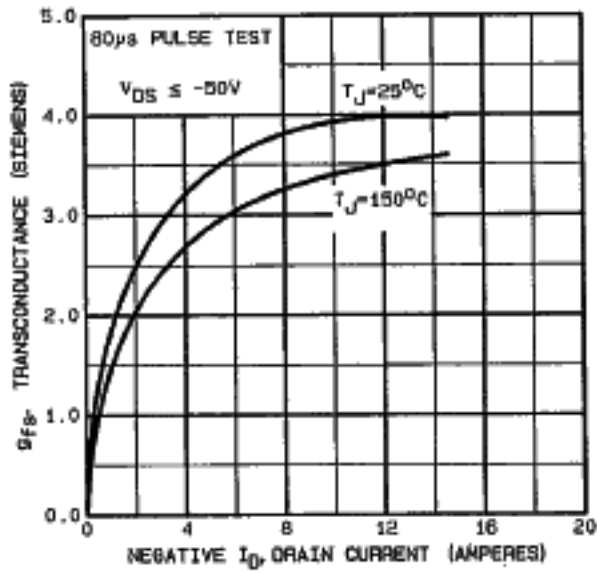


Fig. 6 — Typical Transconductance Vs. Drain Current

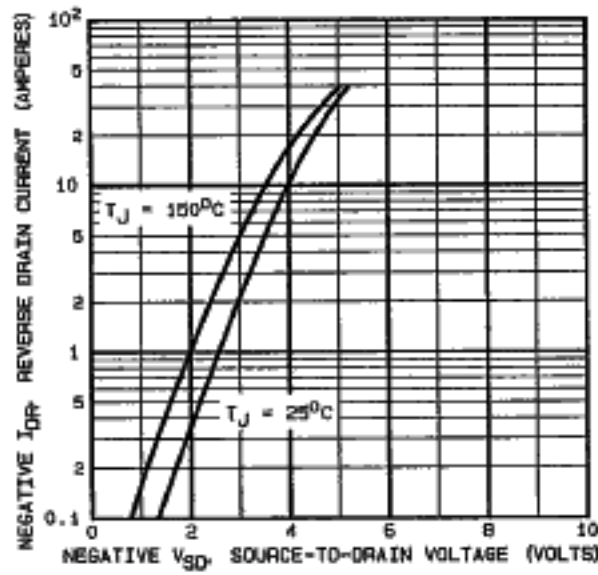


Fig. 7 — Typical Source-Drain Diode Forward Voltage

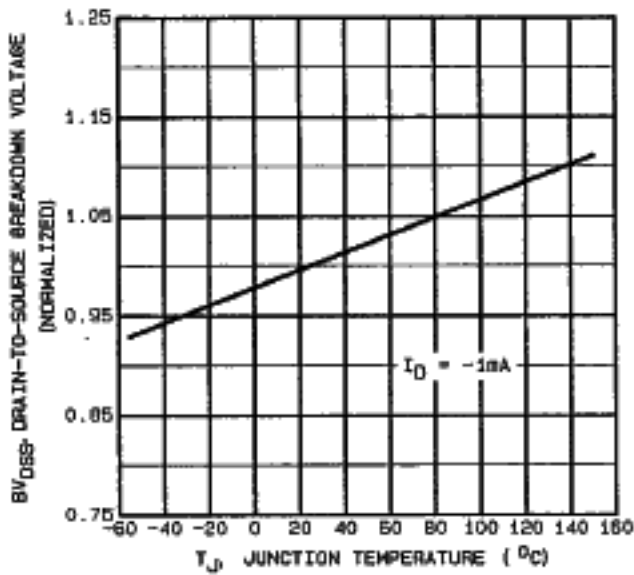


Fig. 8 — Breakdown Voltage Vs. Temperature

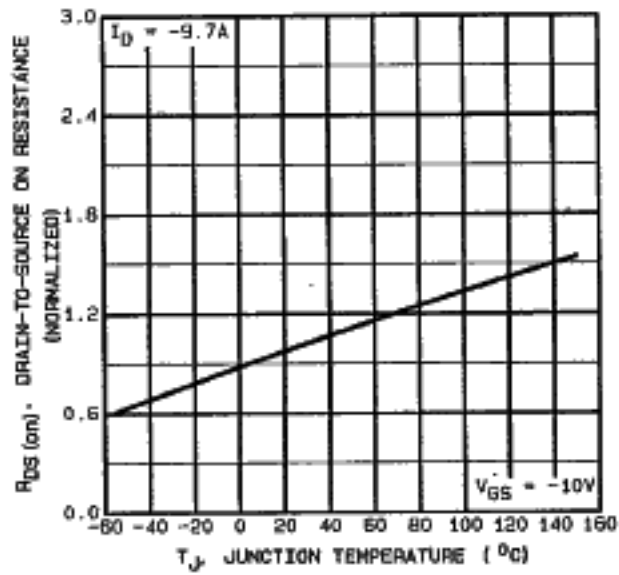


Fig. 9 — Normalized On-Resistance Vs. Temperature

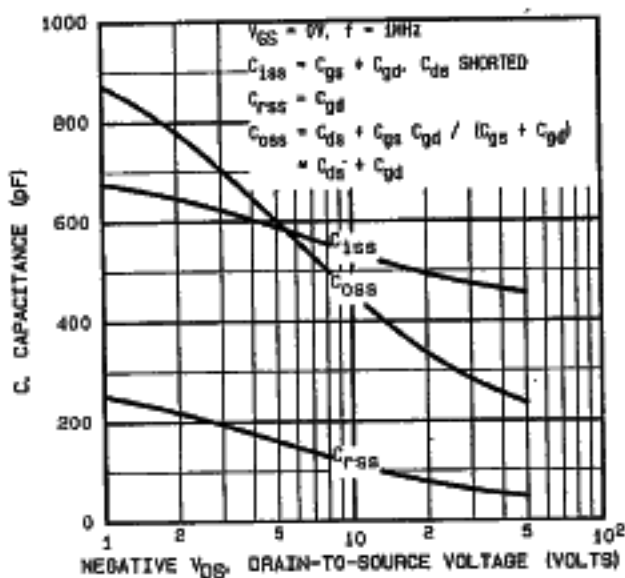


Fig. 10 — Typical Capacitance Vs. Drain-to-Source Voltage

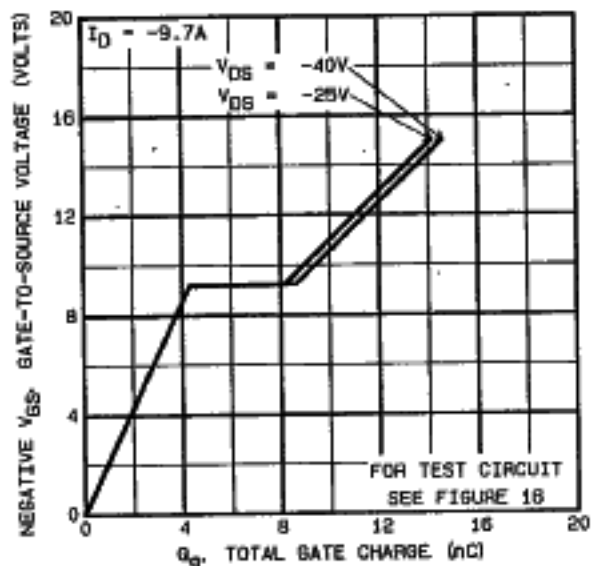


Fig. 11 — Typical Gate Charge Vs. Gate-to-Source Voltage

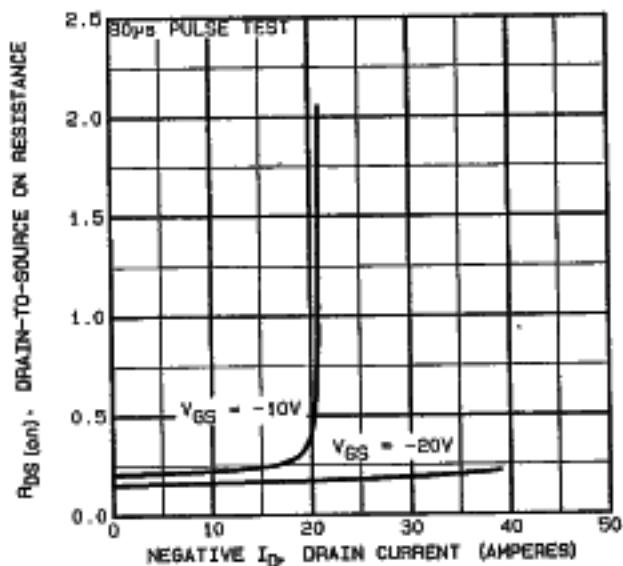


Fig. 12 — Typical On-Resistance Vs. Drain Current

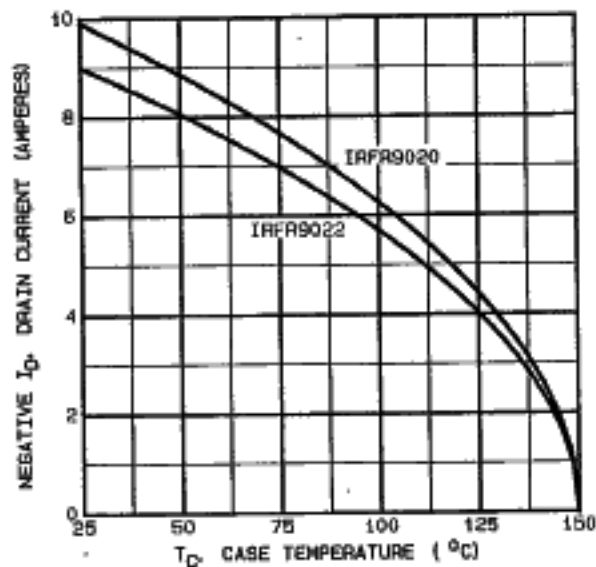


Fig. 13 — Maximum Drain Current Vs. Case Temperature

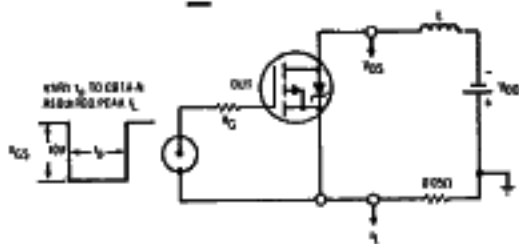


Fig. 14a — Unclamped Inductive Test Circuit

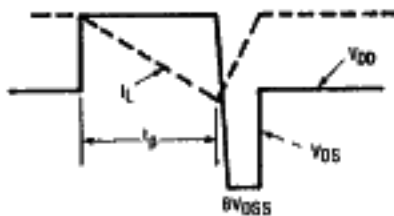


Fig. 14b — Unclamped Inductive Waveforms

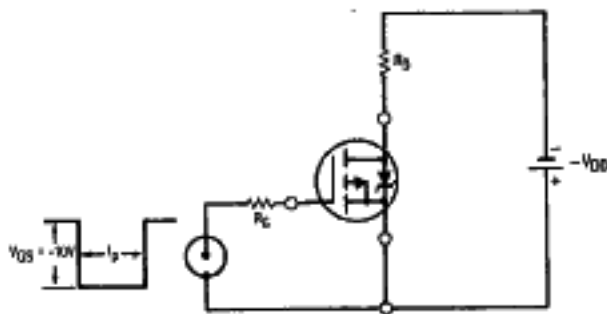


Fig. 15a — Switching Time Test Circuit

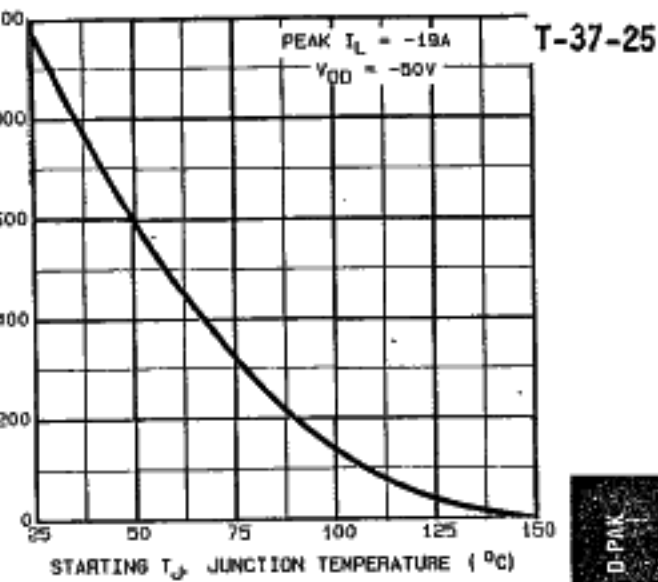


Fig. 14c — Maximum Avalanche Vs. Starting Junction Temperature

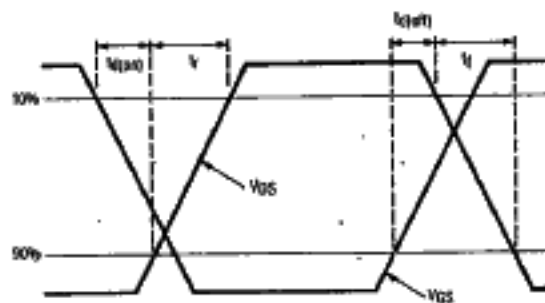


Fig. 15b — Switching Time Waveforms

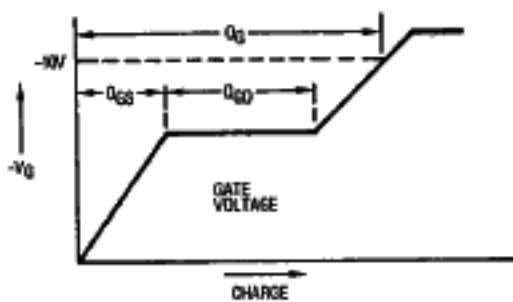


Fig. 16a — Basic Gate Charge Waveform

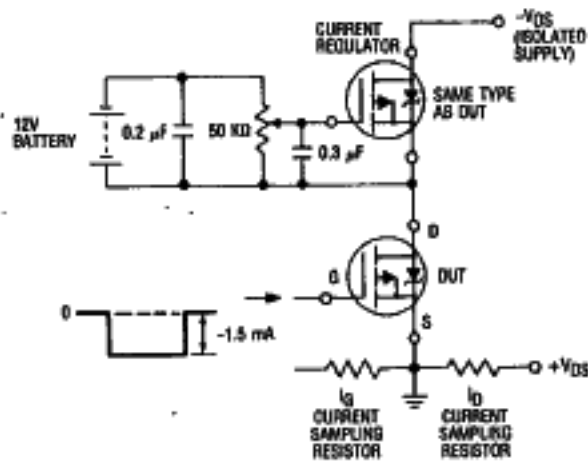


Fig. 16b — Gate Charge Test Circuit

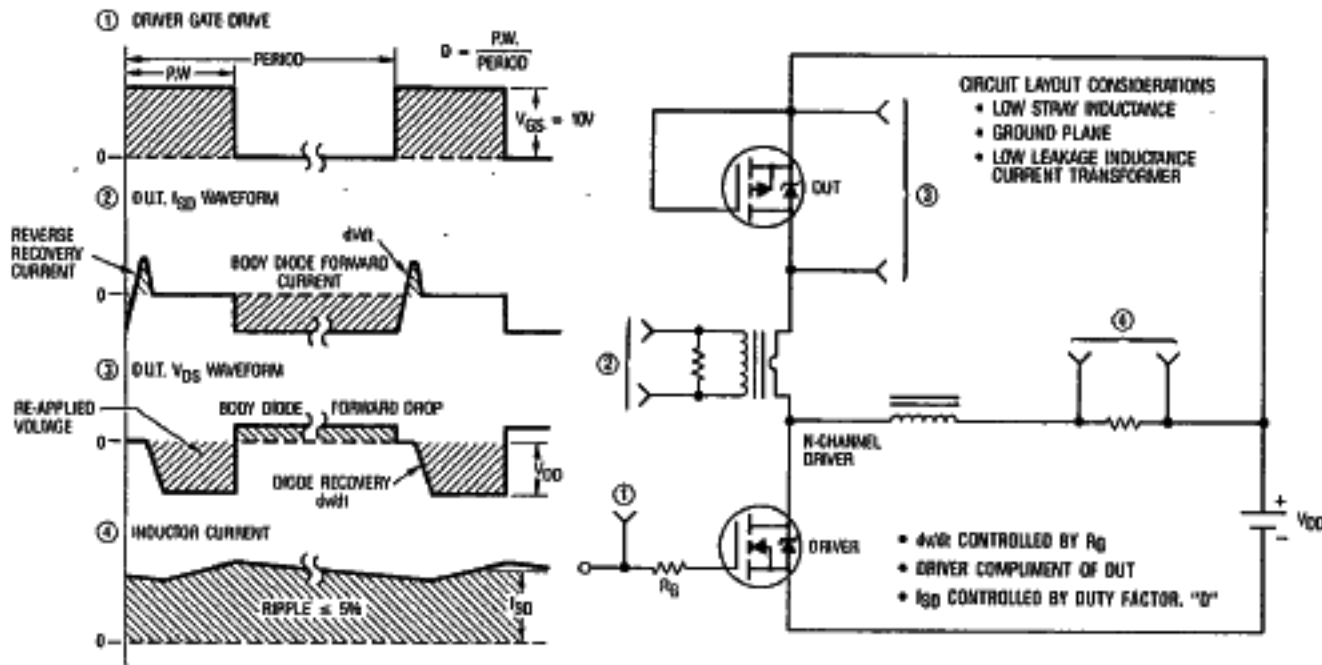


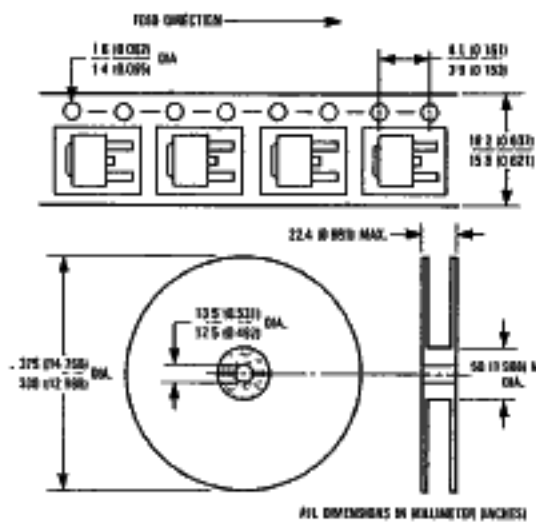
Fig. 17 — Peak Diode Recovery  $dv/dt$  Test Circuit

ORDERING INFORMATION

PACKAGING

IRFR Series — Tape and reel  
when ordering, add TR after the part number  
and the quantity  
(order in multiples of 3,000 pieces).

Example: IRFR9020TR — 15,000 pieces.





This datasheet has been downloaded from:

[www.DatasheetCatalog.com](http://www.DatasheetCatalog.com)

Datasheets for electronic components.